

Technova Group

QTme Quickstart Guide

(v1.1.21)

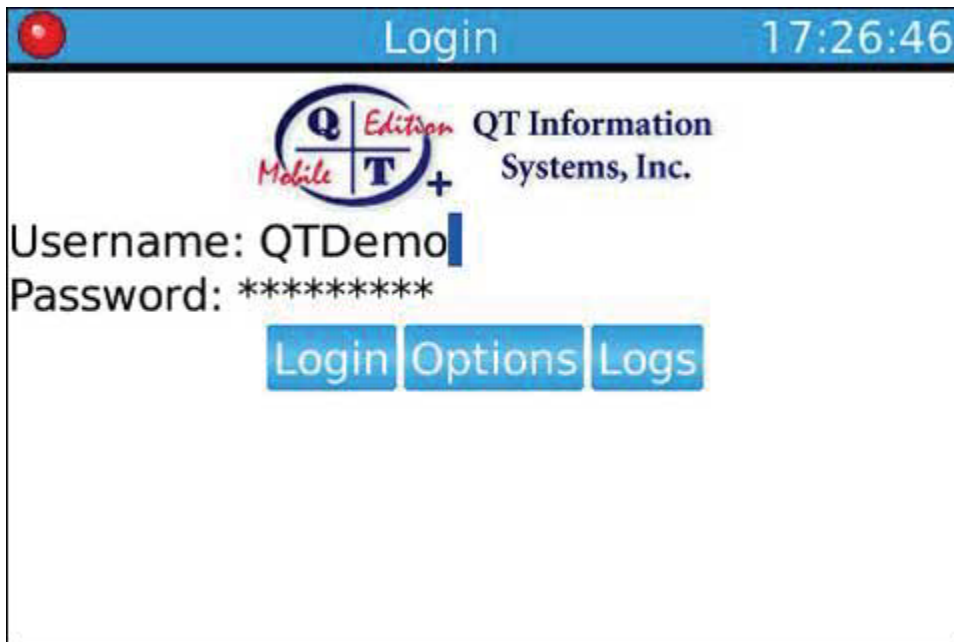
This quick guide assumes you know basic operation of your Blackberry device. Please consult your Blackberry manual on where to find the ALT, SHIFT, ENTER, & SPACE keys, and how to use your trackball/click or scroll wheel/click.

Starting QTme

Depending on your Blackberry operating system, QTme will be installed either in the Application Folder or in the Download Folder. You'll need to start the program from that icon.

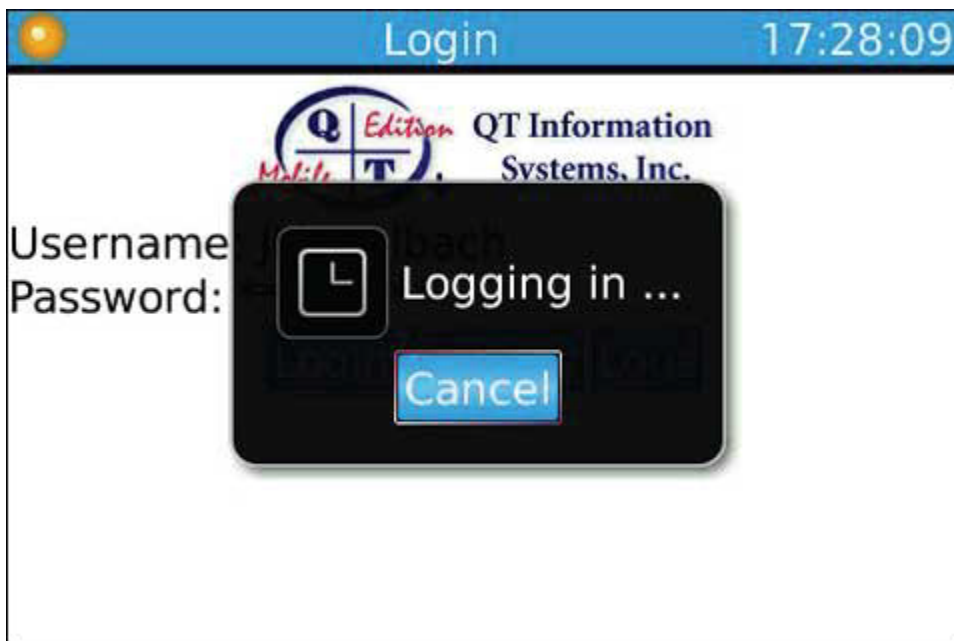


After clicking the QTme Icon you'll be prompted with a login screen.

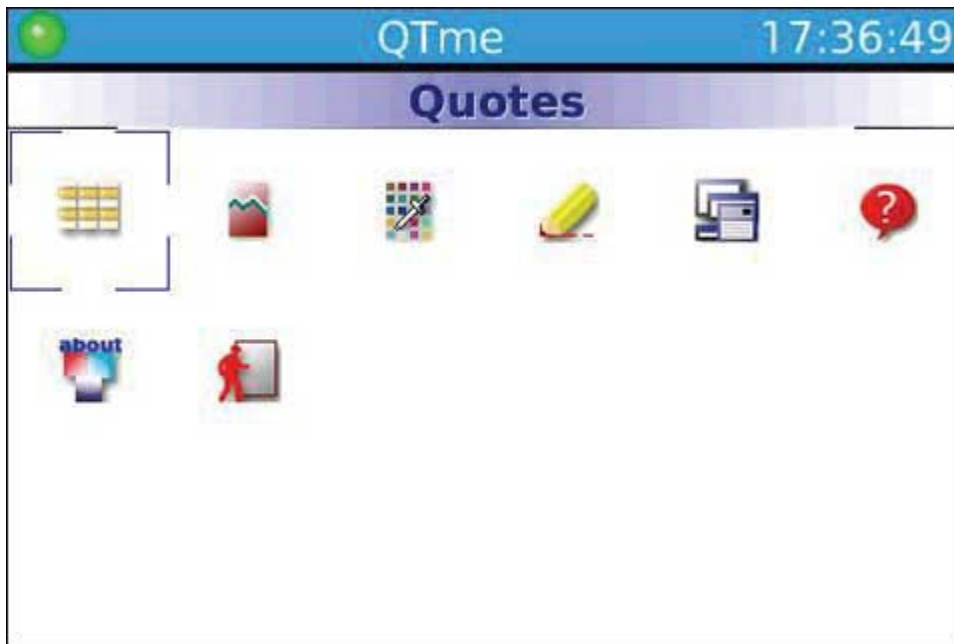


*NOTE: Logging in with QTme will disconnect your QT desktop application.

You will see a progress bar while the program is connecting to the data servers.

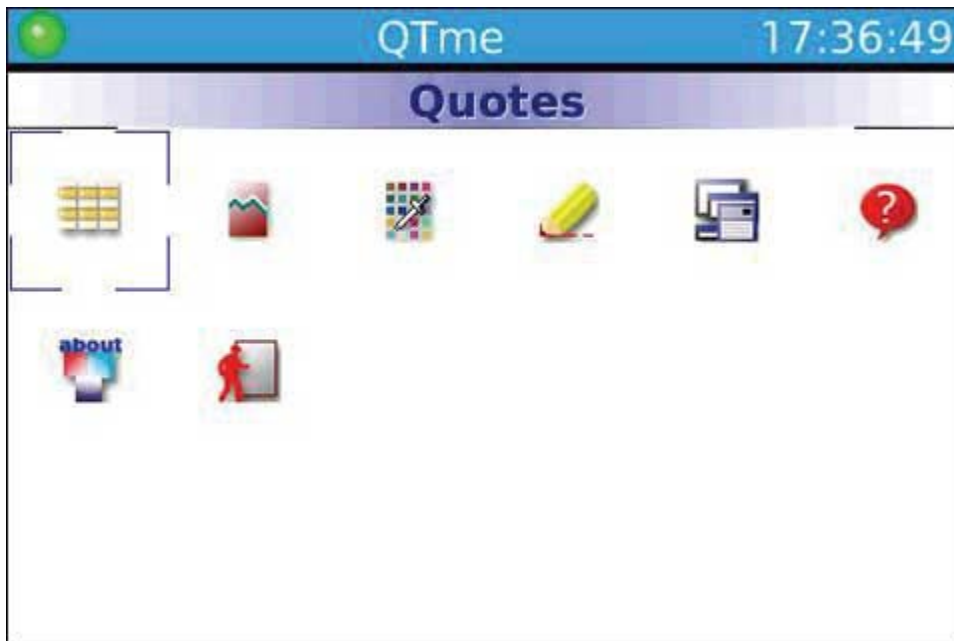


After successfully connecting to the service you will see 8 icons:
Quotes, Charts, Properties, Logs, Save Settings, Help, About, and Logout



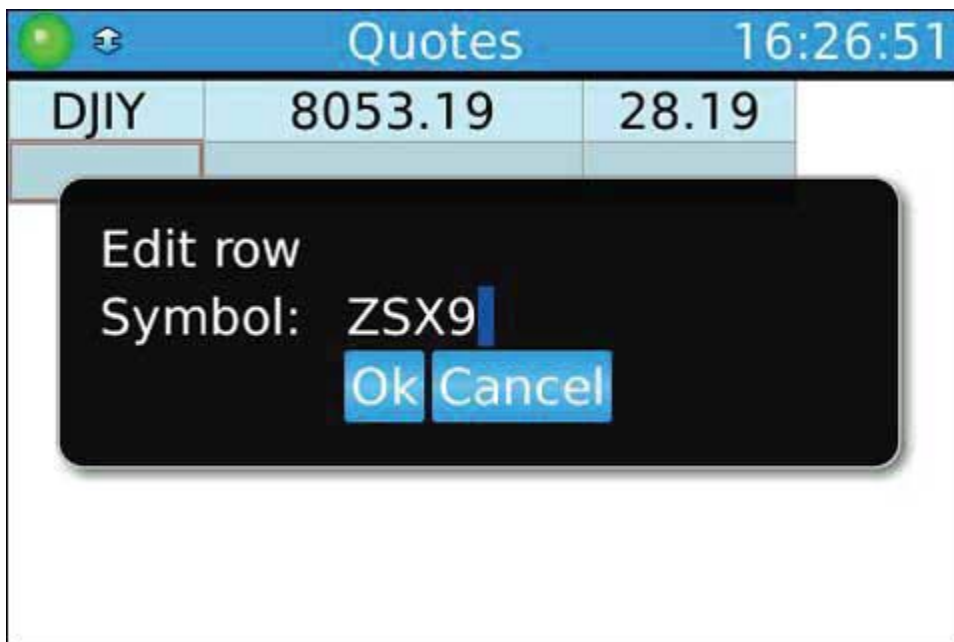
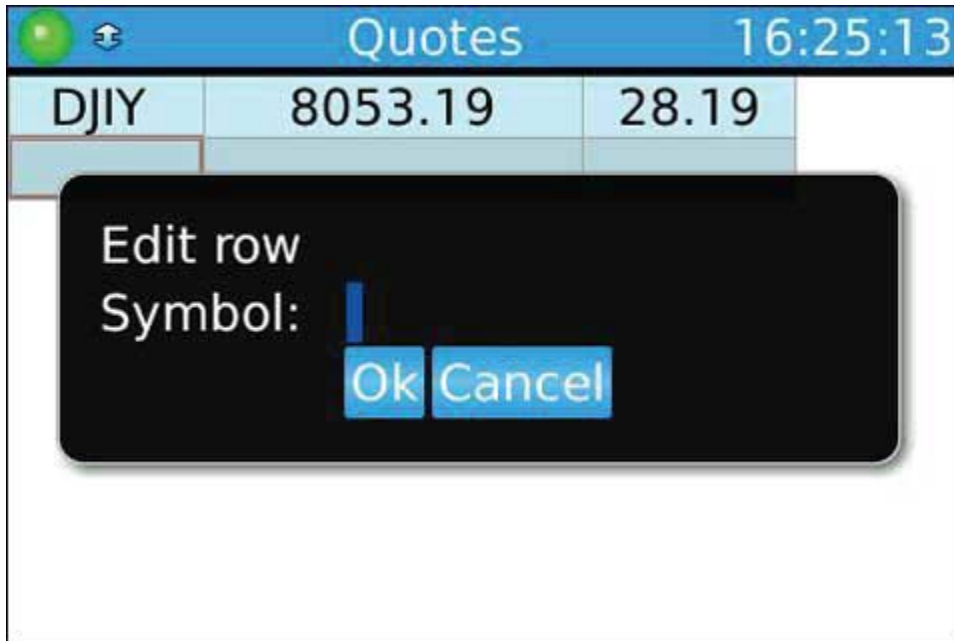
QUOTES

From the Main Menu, use your trackball or scroll wheel to click on the Quotes icon.



To enter a quote symbol in a blank cell

Scroll to an empty cell and press the ENTER key, prompting you to enter a symbol. Enter your selected symbol, then scroll to click OK.



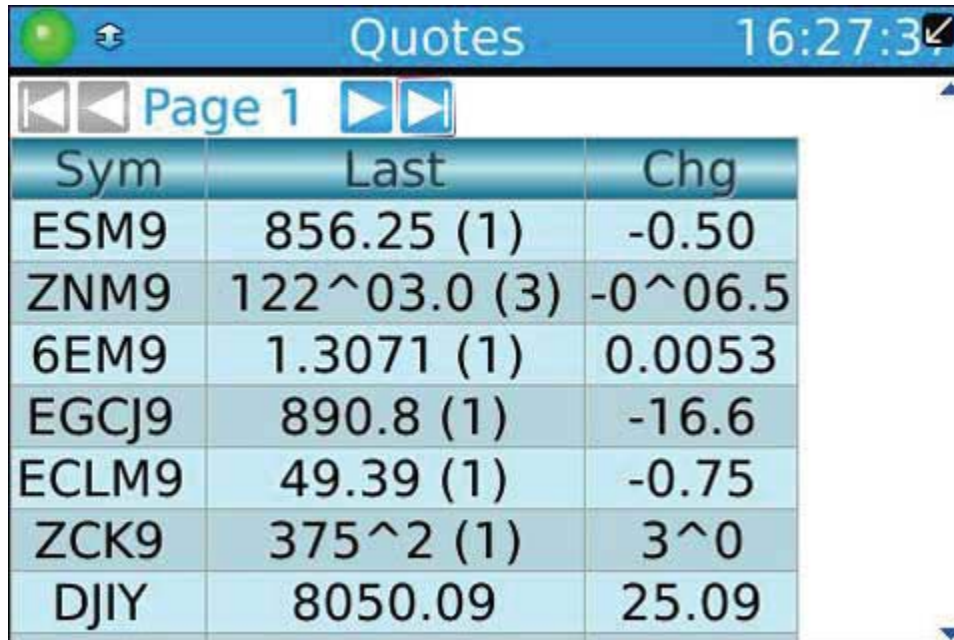
To Scroll UP/DOWN or ACROSS columns

Trackball users: Roll trackball up/down or left/right to move the Quote Monitor around.

Scroll wheel users: Scroll up or down the list of contracts. To move across columns, click scroll wheel, then scroll.

Status Fields

- In the upper left corner is a green/red dot signifying whether the device has a connection.
- In the upper left corner, a double ended arrow tells you which way the scroll wheel moves the cursor.
- In the upper right corner is the current time.

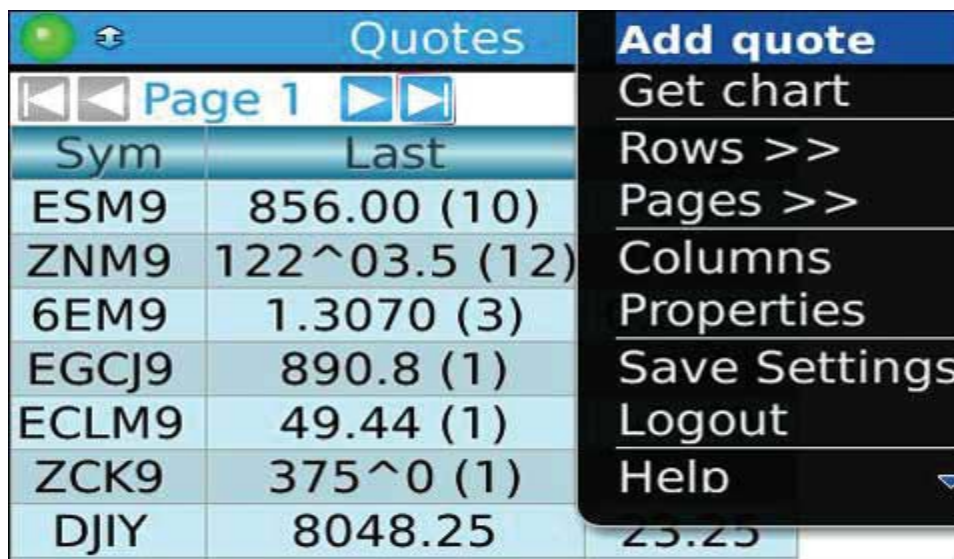


The screenshot shows the Quote Monitor interface. At the top, there is a status bar with a green dot and a double-headed arrow on the left, the title "Quotes" in the center, and the time "16:27:34" on the right. Below the status bar is a navigation bar with "Page 1" and left/right arrow icons. The main area contains a table with three columns: "Sym", "Last", and "Chg".

Sym	Last	Chg
ESM9	856.25 (1)	-0.50
ZNM9	122^03.0 (3)	-0^06.5
6EM9	1.3071 (1)	0.0053
EGCJ9	890.8 (1)	-16.6
ECLM9	49.39 (1)	-0.75
ZCK9	375^2 (1)	3^0
DJIY	8050.09	25.09

To access the Quote Monitor Menu

Press Menu key or press ALT key + click trackball/scroll wheel.

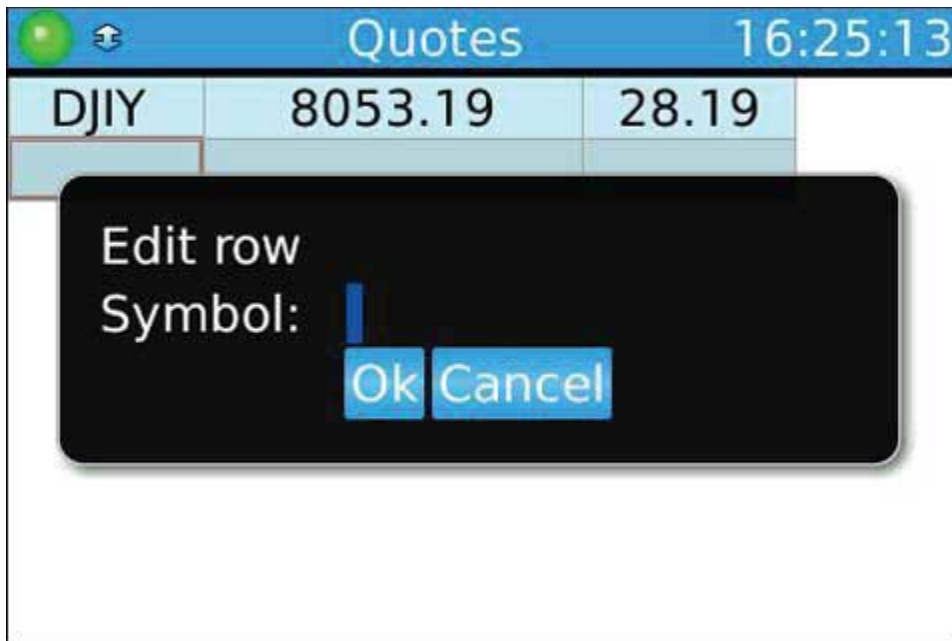


The screenshot shows the Quote Monitor interface with the menu open. The menu items are: "Add quote", "Get chart", "Rows >>", "Pages >>", "Columns", "Properties", "Save Settings", "Logout", and "Help".

Sym	Last	Chg
ESM9	856.00 (10)	
ZNM9	122^03.5 (12)	
6EM9	1.3070 (3)	
EGCJ9	890.8 (1)	
ECLM9	49.44 (1)	
ZCK9	375^0 (1)	
DJIY	8048.25	25.25

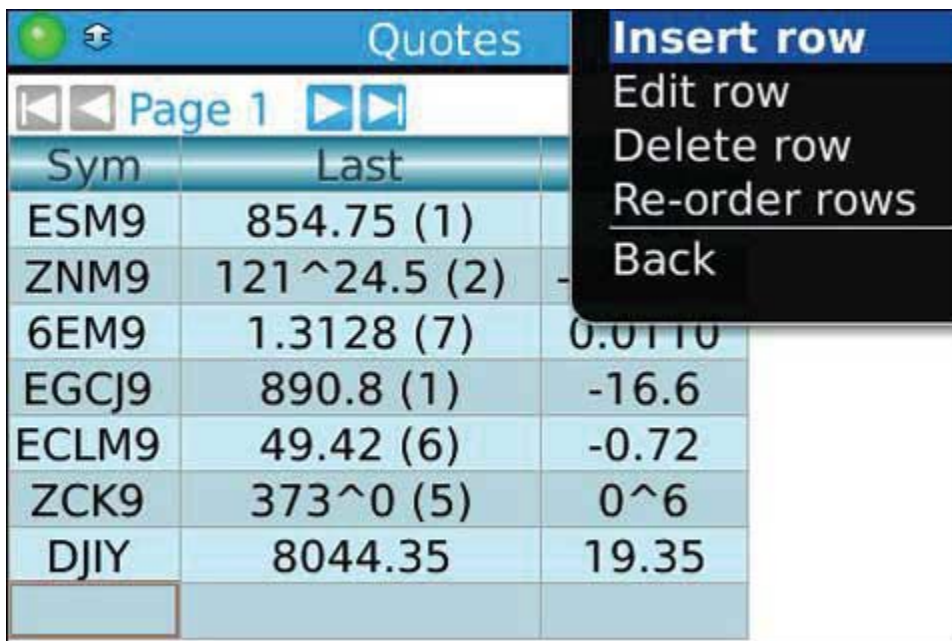
Quote Monitor Menu Actions

Add Quote — Pops up where you can enter a contract symbol



Get Chart — Fetches a chart of the active contract cell

Rows — Available Actions: Insert row, Edit row, Delete row, Re-order rows



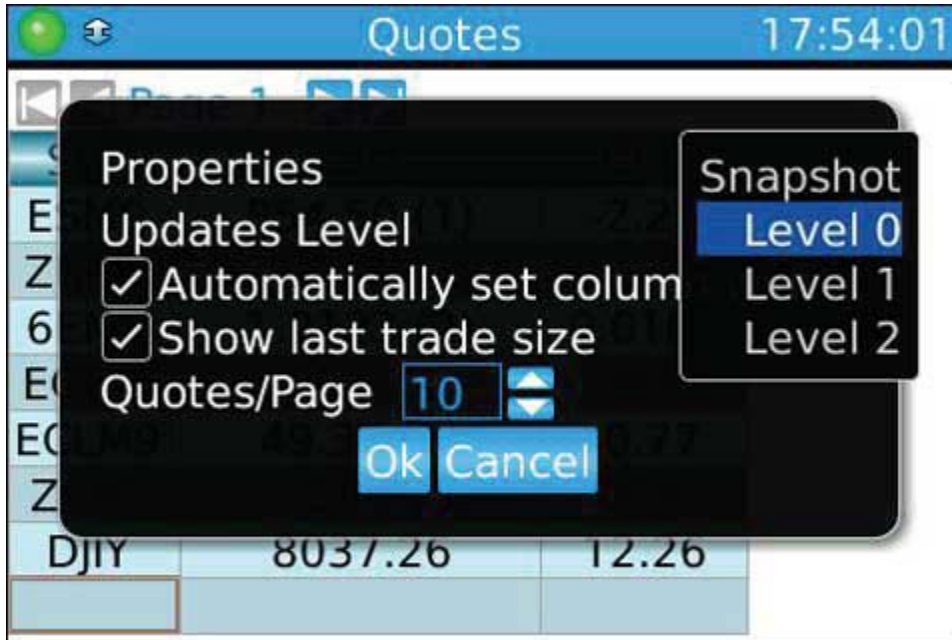
Pages — Sub Menu: Add new page, Rename page, Delete page, Re-order pages

Sym	Last
ESM9	854.75 (1)
ZNM9	121^26.0 (25)
6EM9	1.3128 (7)
EGCJ9	890.8 (1)
ECLM9	49.27 (1)
ZCK9	373^0 (5)
DJIY	8044.35

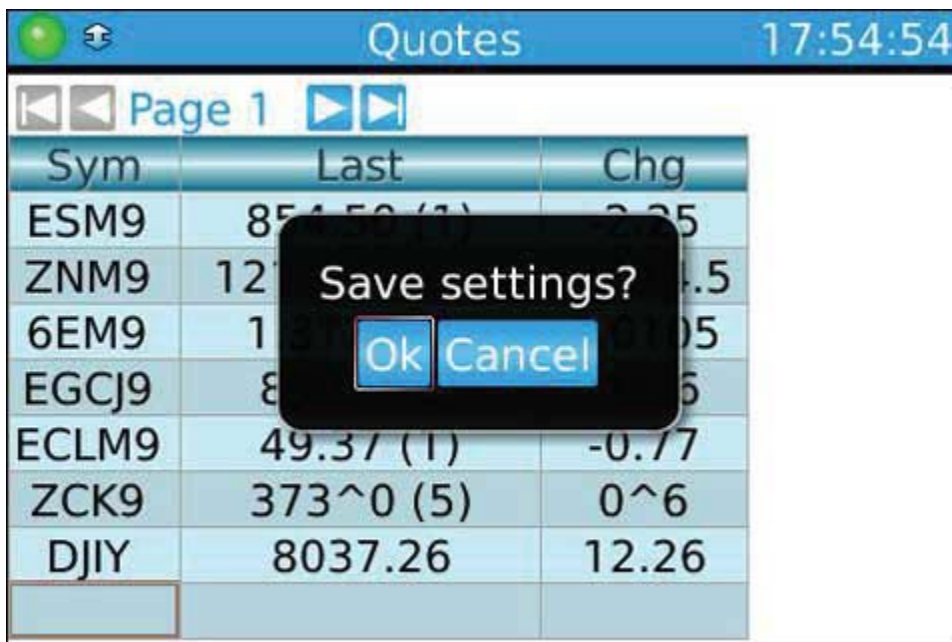
Columns — Select columns you want to display/hide. Use the trackball or scroll wheel to move up/down the list of available columns. Use the SPACEBAR key to select/deselect item.

Sym	Last
ESM9	854.75 (1)
ZNM9	121^26.0 (25)
6EM9	1.3128 (7)
EGCJ9	890.8 (1)
ECLM9	49.27 (1)
ZCK9	373^0 (5)
DJIY	8044.35

Properties — Update Levels: 0, 1, 2; Auto set column width; Show last trade size, Set number of quotes per page



Save Settings — Ok, Cancel



Logout — Log out of program immediately

Help — In program feature guide

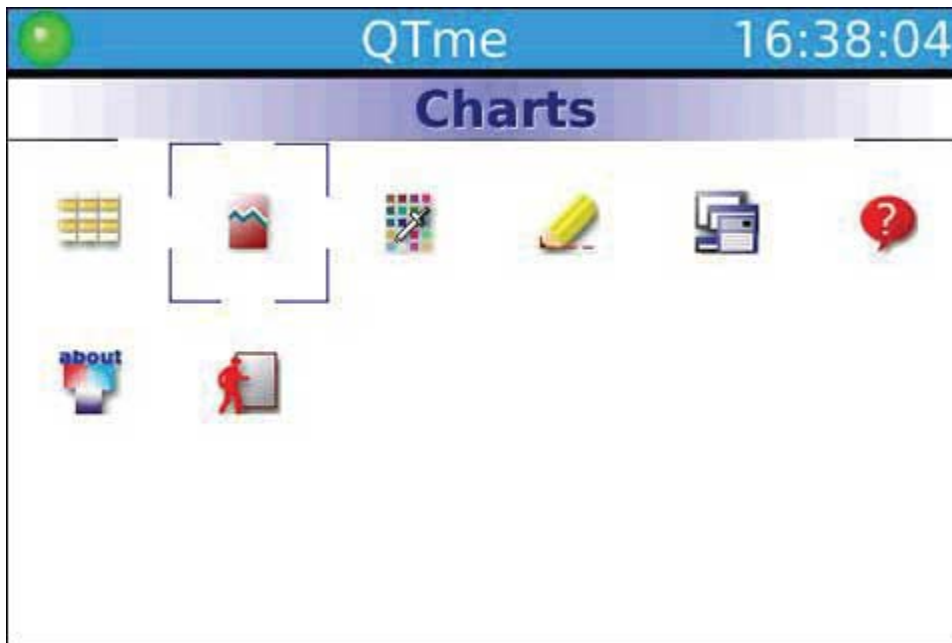
Pages available —If you've set up more than one page, this is an alternate method to access them.

Quote Monitor Hot Keys

- Click on or press the Enter key on a selected row to edit the contract
- Alt + Scroll will re-sized columns
- Alt + Click will re-arrange rows, columns, pages in the liast

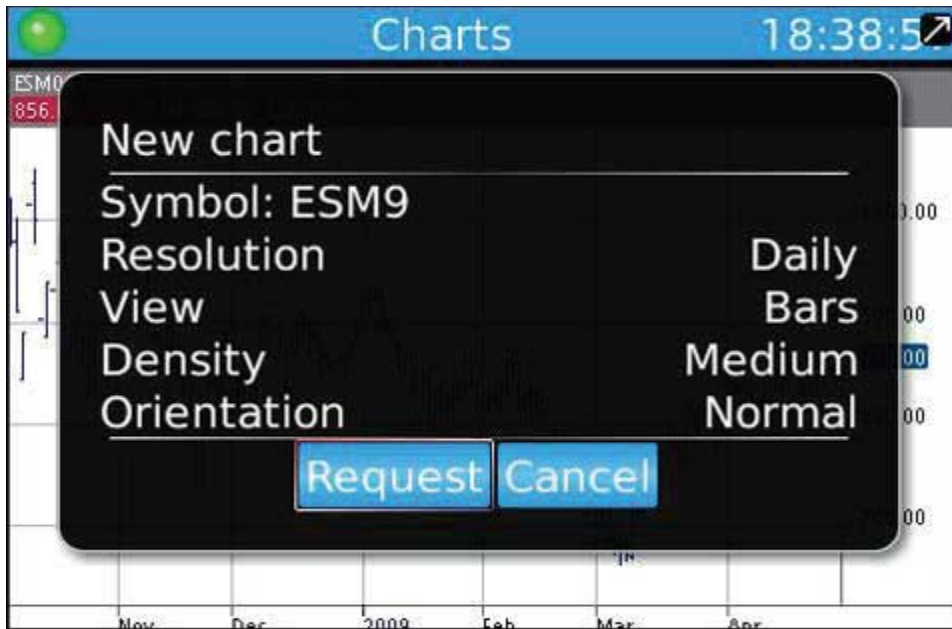
Charts

From the main QT Menu scroll to select the Chart Icon.



The first time you bring up a chart, it will prompt you for a contract symbol. Type in a symbol, select the parameters of the chart and click "Request" when finished.





After clicking the Request button, the chart will appear momentarily.



To access the Chart Menu

Press the Menu key or press the Alt key + click trackball/scroll wheel.



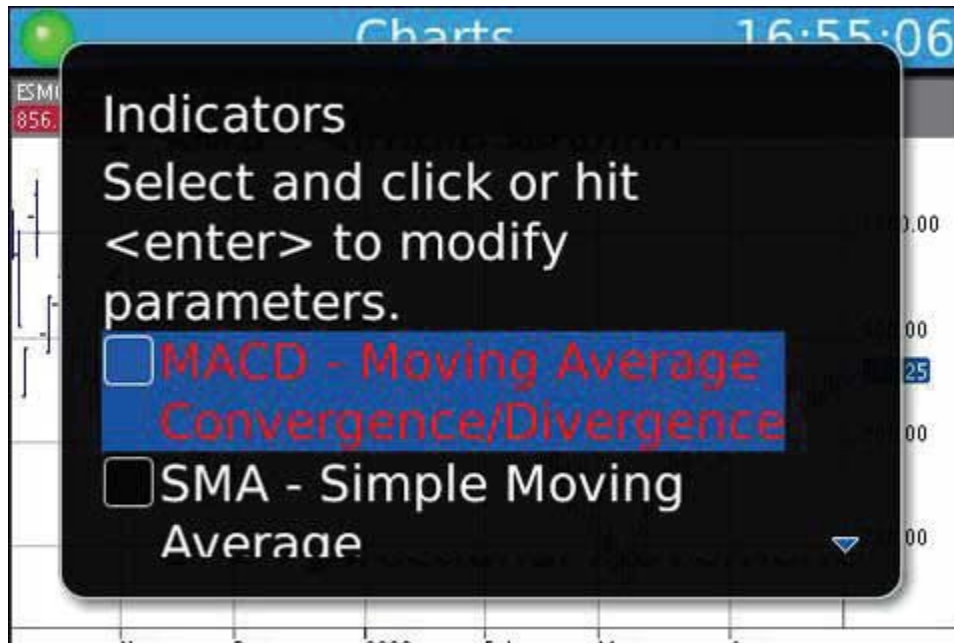
Chart menu actions

New Chart — You can create a new chart.



Refresh — refreshes an existing chart (Pressing the ENTER key will also refresh a chart.)

Indicators — move to selected indicator with trackball, use SPACEBAR key to select, once selected use the ENTER key to change indicator parameters, to add indicator make sure you scroll to and click on “OK” at the bottom



Existing Chart Properties — Resolution, View, Density, Orientation

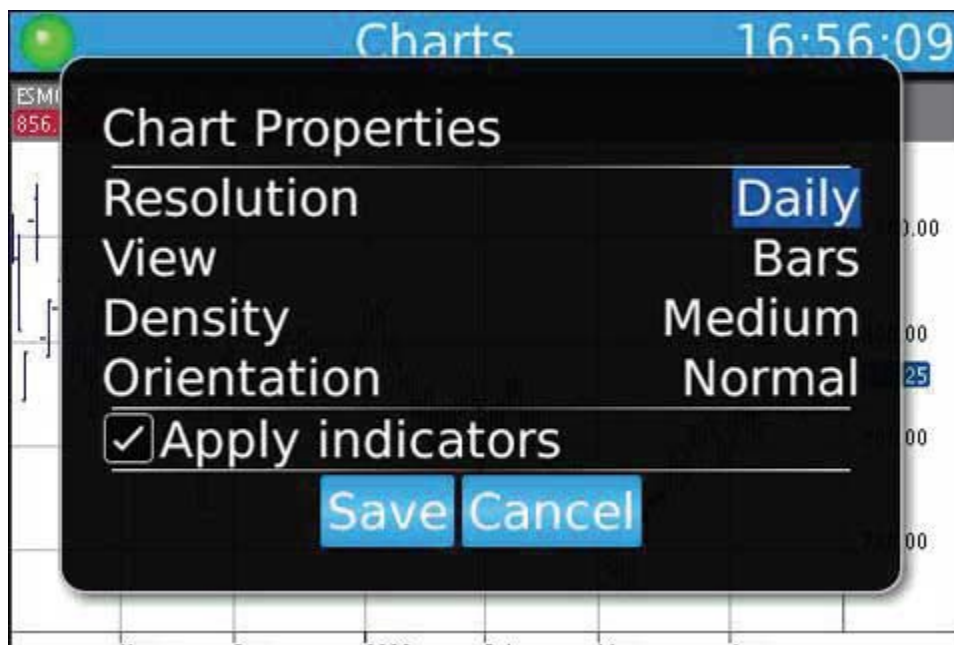


Chart Resolution — select the time frame of the chart

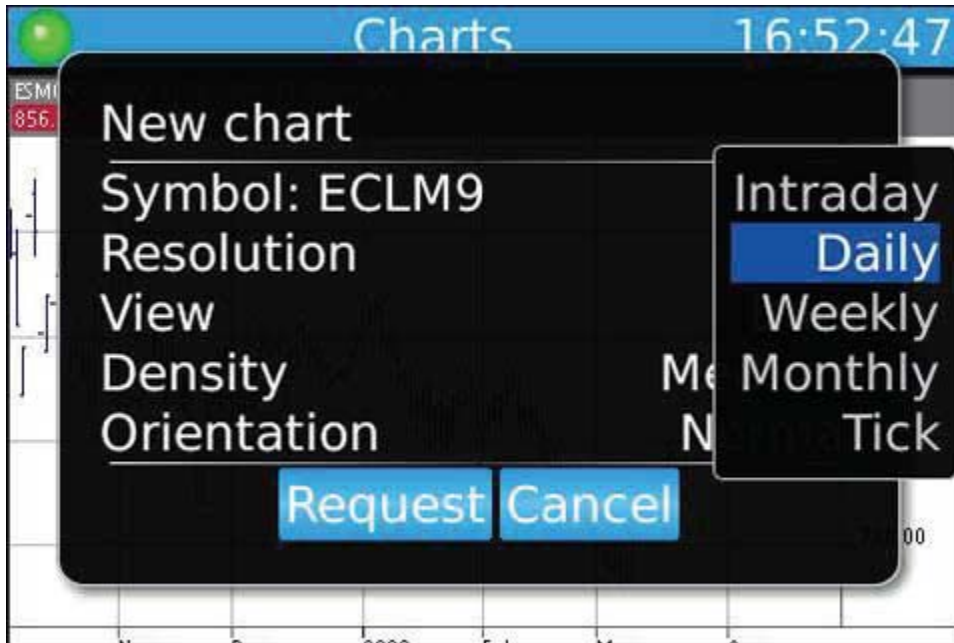


Chart View — Change between types of charts



Chart Density — Sets the spacing between bars

